

# FORCE

Natural listening comfort



 GREEN SERIES

  
"Good hearing connects you to life"



*"Good hearing connects you to life"*

## FORCE SERIES



Aesthetic



Easy to Use



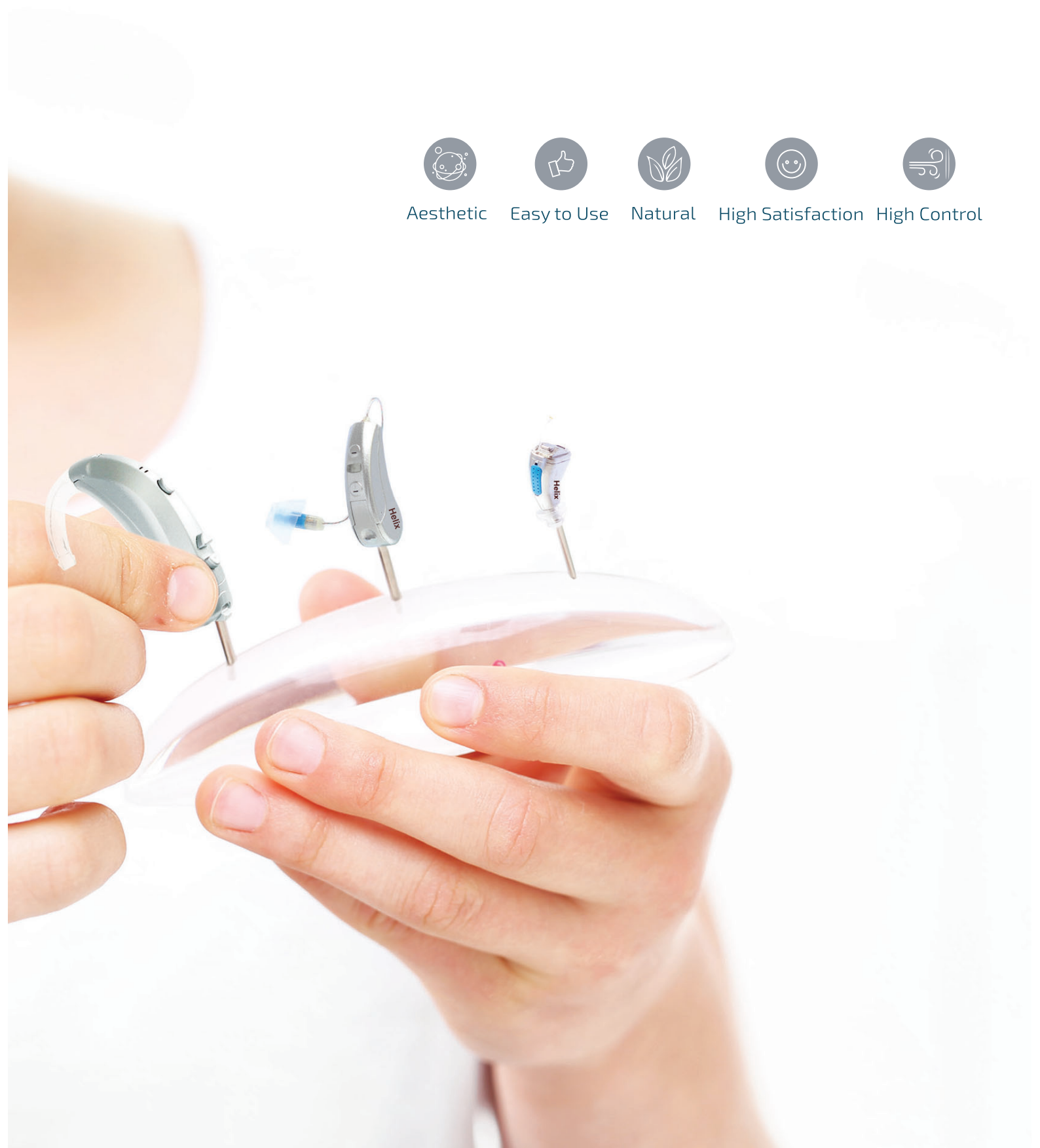
Natural



High Satisfaction



High Control



# WE GOT INSPIRED FROM REAL LIFE

*And  
designed it for you*

The value of technology increases when it is more closer to natural and admired by people.

Confidence in technology starts with the presentation of equal performance in every environment in the active life.

**Force's** wide frequency range offers to hear a wide spectrum of sounds and experience life in its natural state.

# WHY Helix?

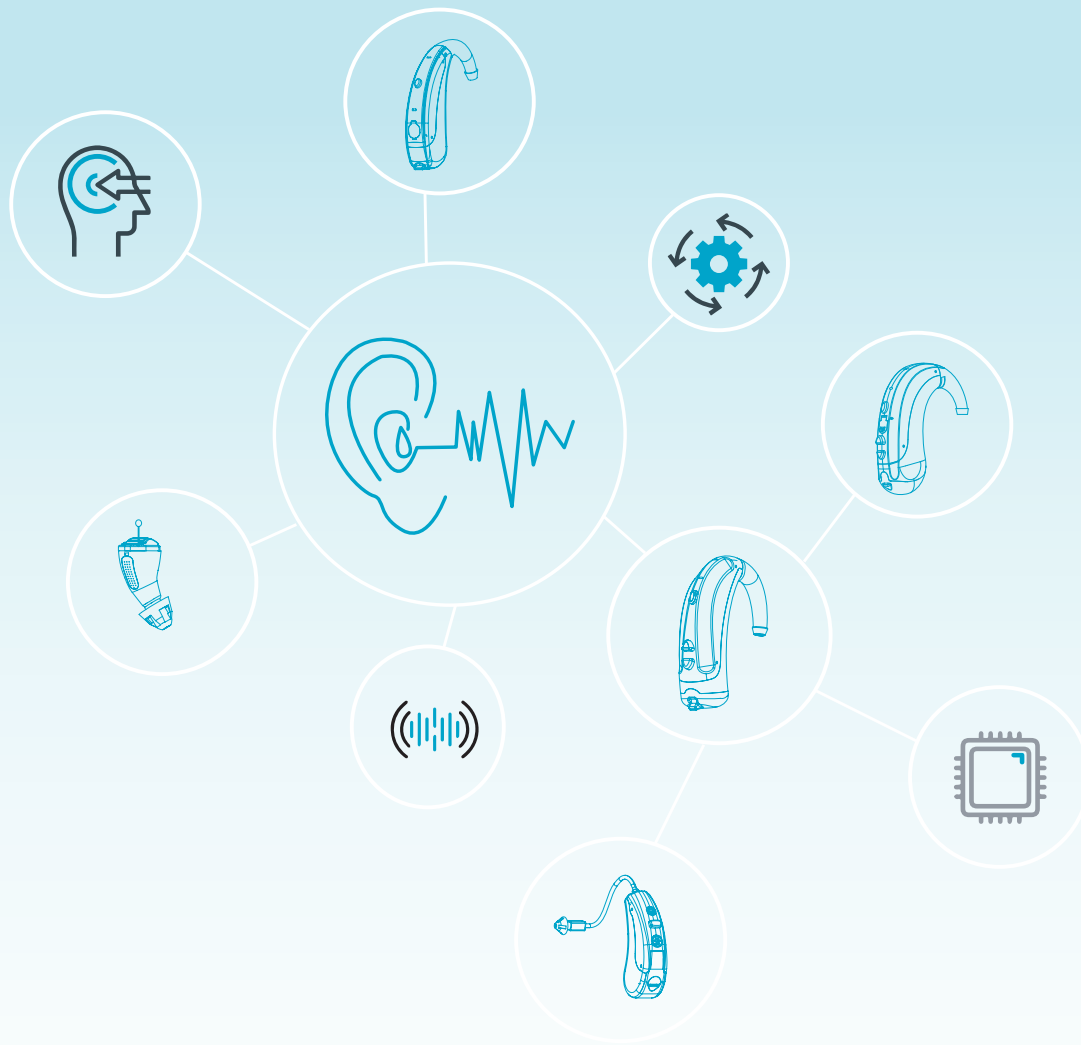
We are a globally recognized brand that never compromises on quality, delivering high-quality sound in any environment and providing an unrivaled hearing experience.

Our cutting-edge hearing technology enhances your hearing comfort and understanding and adds value to your life.



FORCE SERIES





## WHAT ARE THE BENEFITS OF CHOOSING **FORCE** TECHNOLOGY?

**Force** technology allows users to enjoy life by reducing the effort of listening and understanding.

**Force** technology refreshes the users with the features it offers and allows you to spare time for the happiness of life.

**Force** technology provides users with a unique speech experience by providing comfortable understanding.

# FORCE Pediatrics

**Technology that gives children confidence and excitement of learning!**

All words and sounds are indispensable elements for our children's mental development, access to information, profession and interpretation of life.

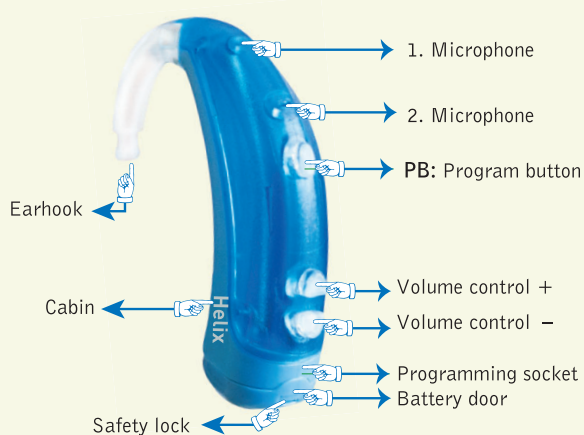


Hearing aids that offer pure sound are the greatest necessity for our children, who are just learning and discovering the world, to be able to communicate successfully and meet their sound needs.

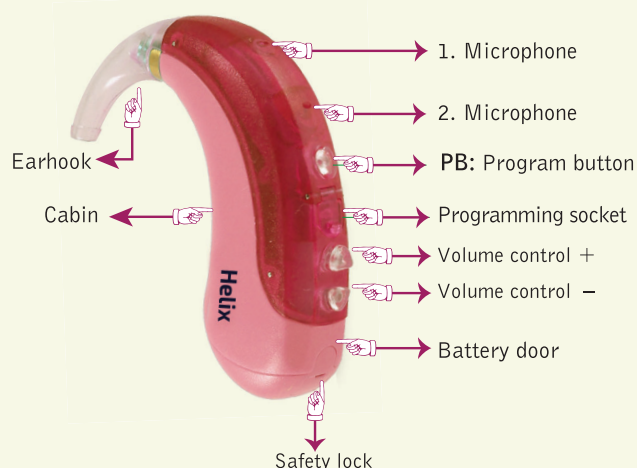
**Force Pediatrics** devices offer sound in a wide frequency range, with innovative hearing solutions suitable for all ages in childhood. Children's world of sound becomes colorful with easy-to-use, high-performance and reliable pediatric devices.

**Force Pediatrics** devices are designed for children to pronounce words comfortably and interact freely with their teachers or friends in their spare time.

Pediatrics SPn



Pediatrics HPn



# TECHNOLOGY CLASSIFIED BY PERFORMANCE!

As hearing technology advances, more hearing solutions become available. **Force** technology developed devices in several categories depending on our level of hearing loss, perceptual state, the acoustic structure of the environment, and our level of comfort; taking into account that our everyday lives are active and variable.

It offers technology solutions in four different categories\*, depending on your expectations and comfort level: Premium, Advanced, Comfort, and Basic.

Hearing Environments	House Ambience	Conversations	Conferences	Restaurants	Public Areas	Worship Sites	Shopping Mall	Working Environment	Party	Music	Vehicle	Dialogue in noise	Difficult Acoustic Environments
TECHNOLOGY LEVEL	PREMIUM												
	ADVANCE												
	COMFORT												
	BASIC												

\*To acquire further information about the categories, it is recommended to get support from **Helix** hearing experts.



# REALISTIC LISTENING ENVIRONMENTS

**Force**, equips you to be a part of life, and strengthens you against different sound levels and sound types in the flow of life by establishing the closest listening environments to nature.

# PERFECT ACOUSTIC ENVIRONMENT ADAPTATION

Despite the various sound levels we encounter and combine in the busy cycle of life, it directs you to your main focus (while driving, riding the subway, in crowded shopping malls). It analyzes your surroundings and adapts your device to the structure of the environment with the autopilot system.



# UNDERSTANDING SPEECH IN A NOISY ENVIRONMENT

**Force** technology is created for those with hearing loss who have trouble understanding in noisy environments and refocus on the speaker; it amplifies sounds from the front and attenuates sounds from behind, allowing users to listen for longer periods of time. Device increases comprehension by focusing on the speaker.

## Natural listening comfort with FORCE TECHNOLOGY!

It keeps continuous noises such as the refrigerator, washing machine, and television at a slightly noticeable level to prevent disturbance. It calms the sounds by keeping loud sounds such as door and bells at a comfortable level. It creates a pleasant sound by increasing the conversations in the noisy background.



# WIND NOISE-FREE TECHNOLOGY

While even the slightest wind noise puts a lot of pressure on the hearing aid microphone and causes disturbance, the unique **Force** technology lowers the wind noise with a variety of solutions.

With **Force** technology; you can enjoy cycling, brisk walking and other sports activities without feeling the wind noise.

Super Feedback Manager: **Force** devices keep the user from being uncomfortable by preventing feedback with a special block system caused by sound cycle. **All the process performed without causing the hearing aid to lose gain or causing the user to notice a change in sound.**



# LIFE WITH MUSIC

Music that warms our souls, connects us to life, and refreshes us; unfortunately loses its vitality with hearing loss and causes us to move away from music gradually. Our connection to music is heavily affected depending on the level and type of hearing loss.

With **Force** technology, you will enjoy music to the utmost, and revert to the days when you didn't have hearing loss.

Feel the music with **Force** technology's wide frequency band and dynamic capabilities, and get the most out of your music.



Sound



Speech



Comfort



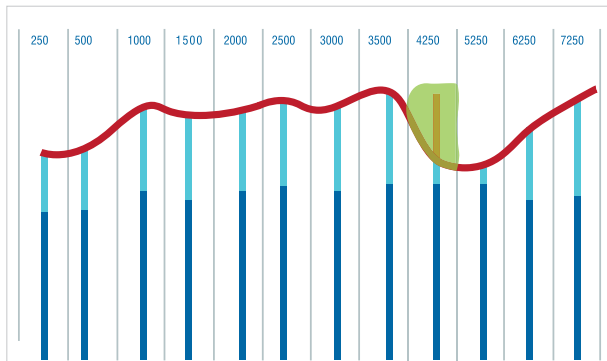
Usage



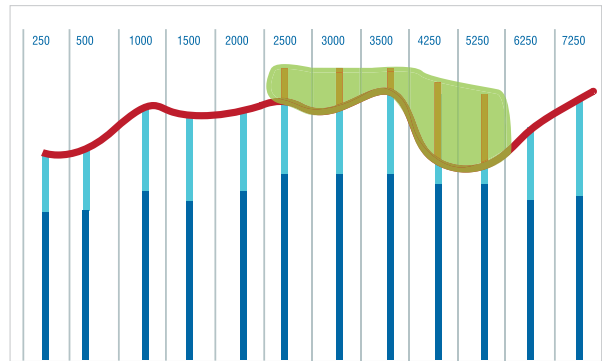
Personal

# NEW GENERATION T-FIS

(Tinnitus-Frequency Isolation System)



Narrowband application



Broadband application

## TINNITUS THERAPY

- We have made the lives of hundreds of thousands of people easier with the decades of experience and the knowledge we have brought to the sector.
- T-FIS (Tinnitus-Frequency Isolation System) offers excellent fitting opportunity with narrow band or wide band application.
- %86 clinically proven high success rate
- Low/Medium/High Frequency fitting
- Tinnitus frequency detection
- Loudness can be measured
- Monaural application
- Binaural application

# FORCE FAMILY OFFERS ALTERNATIVE SOLUTIONS!

User-friendly **Force** technology offers alternative solutions for each different types of hearing loss.



**Force** technology, developed according to user needs and expectations, offers maximum performance with its wide range of products, introducing you to unique solutions and making it easier for you to hear.

**Force** technology, captures and focuses on the sounds in the complex environment and reconnects you to life.

**Force** technology with Helix Clarity platform has faster processor system.

# MEET THE WIDE RANGE OF PRODUCTS

**Force** technology with its wide product range offers unique solutions with alternative styles.

## **Force IIC Device:**

It is a micro type device placed in the bone part of the ear canal. It is hidden in the ear canal and invisible from the outside depending on the anatomical structure of the ear.



The device is comfortable to use and performs well, allowing user to hear sounds in detail and understand words more easily. It works with 10 batteries.

## **Force CIC Device:**

Device is placed in the cartilage bone part of the ear canal. It is hidden in the ear canal and invisible from the outside depending on the anatomical structure of the ear.

Application of the device is easy and provides high performance, allowing user to hear sounds in detail and understand words more easily. It works with 10 batteries.



### **Force ITC Device:**



Device is placed in the cartilage part of the ear canal. It fits comfortably in the ear and may appear very little depending on the anatomical structure of the ear.

It is easy to apply, easy to remove and install, and performs admirably. It is possible to hear sounds in detail and understand words more easily. It works with 312 batteries.

### **Force ITE Device:**



Device is placed at the beginning of the ear canal. Visibility from the outside may vary depending on the anatomical structure of the ear canal.

It is easy to apply, easy to remove and install, and performs well. It works with a 312 battery and battery consumption is lower.

### **Force RIC / RIE Device:**



Mini behind-the-ear hearing aid which the hearing aid technology is placed behind the ear and the receiver is placed in the ear canal. It allows the sounds to be heard in detail and has a long service life.

It can be used with or without molds and resistant against water and dust. (It has IP 68 rating) Low battery consumption with 312 battery.



### **Force Open BTE Device:**

Behind The Ear hearing aid for high frequency hearing losses. Device is small and has an aesthetic design. It has a long service life.

Device doesn't require custom ear-mold. It is resistant against water and dust (IP 68 rated). It works with 312 battery and battery consumption is low.



### **Force SPn Device:**

Super power Behind The Ear device with high performance .

Device doesn't require custom ear-mold. It is resistant against water and dust (IP 68 rated). It works with 13 battery and battery consumption is low.



### **Force HPn Device:**

High power Behind The Ear hearing aid with excellent performance for severe and profound hearing loss.

Custom made ear-mold used and resistant against water and dust (IP 68 rated). It has low battery consumption and works with 675 batteries.



# FORCE AND MORE

**Force** technology is equipped with parameters that increase sound resolution.

**Force** technology perfectly adapts to the hearing loss curve.

**Force** technology excels in noisy environments.

**Force** technology maximizes sound clarity by supporting perfect adaptation with up to 80 compression parameters and 49 channels according to device type.

**Force** technology allows wideband adaptation up to 12 kHz with its circuit.

**Force** technology keeps the ear safe in 16 channels against annoying loud sounds and prevents noise leakage in.

**Force** technology offers up to 8 different memory usage easily.

**Force** technology increases the user comfort with multi-functional button, warnings and notifications in English/German, activation delay, data logging, sound level memory features.

<i>TECHNICAL SPECIFICATIONS</i>	<b>Force 100</b>	<b>Force 200</b>	<b>Force 300</b>	<b>Force 400</b>
Compression Application Parameters	30	40	60	80
Frequency Channels	16	24	36	49
KHz Sampling Frequency	24	24	24	24
MPO Output Limiting	6	8	12	16
EQ Band	16	24	36	49
KHz Wide Band Application *	12	12	12	12
Programs	4	4	6	8
WDRC Independent Channels	6	8	12	16
T-FIS (Tinnitus-Frequency Isolation System)	-	White Noise	White Noise and Ocean	White Noise and Ocean
Noise Reduction	●	●	●	●
Super Feedback Manager	●	●	●	●
Automatic Environment Recognition	-	●	●	●
Acoustic (Tone/Voice) Notifications	●	●	●	●
Low Battery Warning	●	●	●	●
Automatic Volume Control	●	●	●	●
Starting Program Memory Feature	●	●	●	●
Data Logging	●	●	●	●
Activation Delay	●	●	●	●
Fitting Algorithms (NAL-NL2, DSL Adults/Children)	●	●	●	●
Frequency Channels & WDRC Independent Channels	●	●	●	●

\* Bandwidth is available in Gain Adjustments in Fitting software.

### Programming System

Cable: CS44 Programming Cable (4 Pin System)  
 Model: *FO, RIC, SPn, HPn*

Cable: ITE Cable 10 Batt./Right-Left  
 Model: *BOX, IIC, CIC, CIC-P*

Cable: ITE Cable 312 Batt./Right-Left  
 Model: *ITH-D, ITH-P*

Battery: Programming without battery  
 Model: *FO, RIC, SPn, BOX, IIC, CIC, CIC-P, ITH-D, ITH-P*

Battery: Programming with battery  
 Model: *HPn*

Programming Device:  
 Hi-Pro / Hi-Pro2 with USB

Software: CorrectFit2



# FORCE TECHNICAL FEATURES AND DESCRIPTIONS



## Compression Application Parameter

These parameters increase the sound resolution. Easy adaptation with up to 80 parameters depending on the hearing loss curve and the model of the device. It increases the comfort level especially in noisy environments.



## Frequency channel

It offers fine tuning up to 49 channels, depending on the device model. The gain channel regulates the sound balance and maximizes clarity.



## Sampling Frequency

With 24 KHz sampling frequency, it imitates the cochlear and does not miss any detail.



## MPO Output Limiting

It regulates the disturbing sound output up to 16 channels depending on the model. Provides channel-based safe sound. Loud annoying noises never bother the user.



## Wideband Application

Wideband adaptation up to 12 KHz. It covers all speech frequencies and allows music and rare loud sounds to be heard comfortably in daily life.



## Program Memory

Supports 8 program memories with independent parameters depending on the device model. The selection of the active memory can be managed by the button or through the «Automatic Environment Recognition» feature.



## Input Mode

Behind The Ear devices offer different input options. Omni directional, directional or fixed microphone which can be selectively used together with

Telecoil and Microphone with Mix Mode selection. The gain of all selected input modes can be increased / decreased independently.



## Physical Button

The physical button is used for different functions depending on the device model.

Devices with multifunction button features; Short press (2 seconds) on the button changes the program. Long press (6 seconds) adjusts the VC / volume up and down setting.



## WDRC Independent Channels

Depending on the device model, up to 16 WDRC channels provide independent adaptation.

## T-FIS (Tinnitus-Frequency Isolation System)



With the improved **T-FIS**, it offers excellent application opportunity with broadband and separated 9 frequency band. «White Noise» or «Ocean Sound» effect options gives an opportunity for a better tinnitus therapy. It has been proven by clinical research and has a high success rate of up to 86%.

Frequency of tinnitus can be determined. The loudness can be measured. Monaural and Binaural application.



## Noise Reduction

With advanced noise detection algorithm, the channel-based noise reducer gradually reduces the outdoor noise on the basis of 49 frequency channels.



## Super Feedback Manager

Enables special application opportunity for narrow canals.

Enables special application opportunity for straight and short canals.

Enables special application for powerful devices.

Enables to open Large Vent. Offers «Occlusion Free» application without pressure.

It gives better gain to Consonant letters with innovative and best feedback management.



## Automatic Environment Recognition

It has smart environment recognition feature that automatically selects the environment depending on the device model and acoustic sound character.

It automatically classifies the acoustic environment and activates the appropriate program memory.

Detection parameters and behavior of the device can be adjusted for any environment and it is completely flexible. It supports quite, calm speech, noisy, loud speech, wind and music.

Automatic environment analysis system provides a better adaptation to every environment.



## Acoustic Notifications

It has voice warning notifications in English / German / Turkish depends on the model.

Voice notifications:

- Maximum and minimum notification of the volume setting,
- Program memory change notification
- Low Battery notification
- Device activation notification.

Tone Notifications:

- Sound level change notification



## Sound Level Memory Feature

When the device starts to operate after inserting the battery, it keeps the last volume level in the memory. If this feature is activated, device will start at the last volume level of the last device activation.



## Starting Program Memory Feature

When the device starts to operate after inserting battery, it keeps the last program in the memory. If this feature is activated, device will start at the last program of the last device activation.

## Data Logging

The data logging function can be activated optionally which records the user's hearing aid usage time and actively used program memory information.



## Activation Delay

Activation of Force device is delayed and starts a softened volume level to reduce unwanted effects during placing the hearing aid in the ear after instalment of the battery in the device.



## Battery Options

Battery options vary depending on the device model.



# **good hearing** **connects you to life**

**Helix** has adopted the principle of solving the hearing problems since 1971, is constantly working to make people with hearing problems and their families happy with the products and solutions it offers.

**Helix** introduced superior helixhearing technology to hundreds of thousands of people in more than 50 countries around the world; proud to put a smile on faces and make them happy with the sound and music in the ears, and songs and poems on their tongue.

**Helix** never gives up on its ambitions, together with its solution partners, to help people to focus on sounds better and hear the sounds that exist in the universe with all of their features, by continuing to discover leading technologies for people to be strongly connected to life.



Do not worry about  
your **tinnitus**

Regain your peace with

**Helix T-FIS THERAPY**



[helixhearing.com](https://helixhearing.com)  
Helix is a trademark of ear-teknik

**Helix** hearing<sup>®</sup>  
"Good hearing connects you to life"

# FORCE

Natural listening comfort



You can contact your hearing center to get detailed information about **Force** technology, or you can access the detailed information through the channels below.



[www.helixhearing.com](http://www.helixhearing.com)



[/helixhearing](https://www.facebook.com/helixhearing)



[/helixhearing](https://twitter.com/helixhearing)



[/helixhearing](https://www.instagram.com/helixhearing)

Distributor:

ear-technik® reserves the right to change the information in the bulletin.



Yesilkoy Mah., Sehit Ozcan Canik Sok.,  
No.2/5 34149 Bakirkoy/Istanbul/Turkey  
Tel.+90 212 557 91 68 | [helixhearing.com](http://helixhearing.com)



Mühlengrund 2, 45355  
Essen / Germany  
[www.eartechnik.com](http://www.eartechnik.com)



Karamehmet Mh. Adnan Arisoy Bulv. Avrupa Serbest Bolg., No.13/305, 59930 Ergene-Tekirdag-Turkey

Helix is a trademark of ear-technik

OB.04.01/S.133/134/141/142/03.08.2021/00